



# Building the **FUTURE**

---

## Annual Report 2018 - 19



## Table of Contents

Vision, Mission and Motto	4
Background	5
Message from the Chairman of Board of Governors	8
Message from the Chairman of Institute Council	9
President's Overview	10
Governance and Organisation	12
Board of Governors	13
Institute Council	14
Management Team	15
Highlights of the Year	16
Professional Education	22
Quality Assurance System	23
Overseas Collaboration and Learning Experiences	24
Career Planning Education	25
Serving the Community	26
Scholarships and Financial Assistance for Students	28
Advancing Research Strengths	30
Finance	32
Facts and Figures	33
Selected Publications in 2018 - 19	34

## Vision, Mission and Motto

### Vision of the Institute

The vision of Caritas Institute of Higher Education (CIHE) is to nurture graduates who are not only professionally well-trained and academically well-educated, but who can also contribute to the social and moral well-being of society. We reach out to empower *the last, the least and the lost*, who are under-served, to realise their potential. Our life education programmes, based on the Catholic tradition, aim to enable learners to excel in a holistic manner, especially where “*Service with Love*” makes a difference. We aspire to become the Saint Francis University, and a well-respected and internationally recognised institution in the longer term.

### Mission of the Institute

The mission of the Institute is embodied in our three-pronged approach to add value and stay relevant to young people:

- ▶ *Professional Development* – This is particularly important as many of our students come from the grass root. Readiness for a professional career enhances their chances of upward mobility and hope in life. Wherever appropriate, our programmes aim to prepare graduates for professional recognition on par with their counterparts from publicly-funded institutions.
- ▶ *Sound Education* – Through getting our programmes accredited by the Hong Kong Council for Accreditation of Academic and Vocational Qualifications (HKCAAVQ), we strive to adopt the best practices in Organisational Quality Assurance and Enhancement, and to institutionalise continuous self-improvements in our management practices.
- ▶ *Positive Life Values* - Our motto of “*Ad Destinatam Persequor*” (自強不息) is to inspire our students to stride unceasingly for self-enhancement. Inculcating this spirit of life-time learning will put them in good stead in a future, where knowledge will get superseded quickly by fast changing technological and social changes. This spirit is also vital in empowering the last, the least and the lost to realise their potential.

### Motto of the Institute

#### AD Destinatam Persequor 自強不息

*I do not consider that I have made it my own; but one thing I do, forgetting what lies behind and straining forward to what lies ahead, I press on toward the goal for the prize of the upward call of God in Christ Jesus.*

<Phil 3:13 – 14>

我並不以為我已經奪得，我只顧一件事：即忘盡我背後的，只向在我前面的奔馳，為達到目標，為爭取天主在基督耶穌內召我向上爭奪的獎品。

<斐 3:13-14>

## Background

Formerly known as Caritas Francis Hsu College (CFHC), CIHE commenced its operation in 1985. In 1990, the College was approved by the then Hong Kong Government to provide post-secondary education, and had since offered three-year Professional Diploma programmes, in the disciplines of Accounting Studies, Company Secretaryship and Administration, Computing Studies, and Translation and Interpretation. On 8 August 2001, the College was accorded the registration status as an approved post-secondary college (under the Post-Secondary Colleges Ordinance, Cap. 320), and its four Higher Diploma programmes, modified from the three-year Professional Diploma programmes, were validated by the then Hong Kong Council for Academic Accreditation (HKCAA) (now renamed as HKCAAVQ) as comparable in standard and standing with those offered by other local and overseas institutes.



The provision of Associate Degree (AD) programmes from the 2002-03 academic year marked a new milestone in the College's academic development. The Associate of Social Science in Social Work (ASSSW) Programme (full-time mode) was launched in the 2004-05 academic year, followed by the part-time mode in 2009-10. New provision in 2009-10 included the Higher Diploma in Human Services (HDHS) Programme.

In October 2010, the College underwent an institutional review conducted by the HKCAAVQ for upgrading its registration to degree-conferring status and for the provision of Bachelor's degree programmes. Its first undergraduate degree programme, the Bachelor of Business Administration (Honours) (BBA) Programme, with three study streams in Accountancy, Corporate Management, and Information Systems, was validated by the HKCAAVQ in December 2010 and launched in the 2011-12 academic year. Subsequently, the Chief Executive in Council granted approval to the College to change its name to Caritas Institute of Higher Education with effect from 27 May 2011.

The 2011-12 academic year also marked the success of CIHE, firstly, in procuring a Government land grant of the site adjacent to the current campus of Caritas Bianchi College of Careers (CBCC) at Tseung Kwan O, and secondly, in undergoing a number of accreditation exercises to enhance its sub-degree provision as well as expand its BBA Programme with three additional study streams in Marketing and Event Management, Hotel Management, and Tourism Management.

The Institute continued to undergo programme accreditation exercises mainly to expand its degree programme portfolio. In the 2012-13 academic year, two new programmes, namely, the Bachelor of Arts (Honours) in Language and Liberal Studies (BA(LangLib)), and the Bachelor of Social Sciences (Honours) (BSocSc), were validated by the HKCAAVQ. The BA (LangLib) Programme comprising three study streams, namely, Chinese and Philosophy, English and Communication, and Bilingual Studies, was launched in 2013-14. The BSocSc Programme also comprises three study streams, namely, Community Studies, and Psychology that were launched in 2013-14, and Social Work that was launched in 2014-15 after its professional accreditation by the Social Workers Registration Board (SWRB). The Institute underwent the validation of its Bachelor of Nursing (Honours) (BNurs) Programme in the 2013-14 academic year. The professional accreditation of the BNurs by the Nursing Council of Hong Kong (NCHK) was completed in 2014-15, and this programme was launched in the second semester of that academic year. In 2014-15, two more new programmes, namely, the Bachelor of Science (Honours) in Digital Entertainment (BSc(DE)) and the Bachelor of Social Work (Honours) (BSW), were validated by the HKCAAVQ. The BSW Programme successfully underwent its qualification recognition by the SWRB in mid-2016, and was launched in January 2017. Another new top-up programme, Bachelor of Health Sciences (Honours) (BHS), was validated by the HKCAAVQ and the first cohort of students was recruited in 2017-18.

The new campus of CIHE (designed to be integrated with the adjoining campus of CBCC) also came into full operation in the 2017-18 academic year, providing learners with up-to-date teaching and learning facilities.

The Institute has been developing its academic provisions in the discipline of Early Childhood Education (ECE) since late 2016. In accordance with its plan, the Higher Diploma in Early Childhood Education (HDECE) was accredited and approved in 2017-18, and was launched in the summer of 2018. The Bachelor of Education (Honours) in Early Childhood Education (BEdeCE) was accredited by the HKCAAVQ in 2019, and is now undergoing the final approval, before its planned launch in the summer of 2020.

The current programme portfolio of CIHE mainly comprises programmes that are pitched at Hong Kong Qualifications Framework (HKQF) Level 5 or above whereas the current programme portfolio of its adjoining sister CBCC mainly comprises programmes that are pitched at HKQF Level 4 or below. Coordinated articulation routes between CIHE and CBCC programmes in a two-college system, therefore, afford learners with flexible, multiple pathways of upward mobility, and provide CIHE with a student feeder mechanism.

In working vigorously towards becoming the first Catholic university in Hong Kong (to be known as Saint Francis University), the Institute is continuously strengthening its academic structure and rigour, and diversifying its academic provision to encompass a clearly-positioned portfolio of Bachelor's Degree programmes. In addition, the Institute will be developing selectively Master's degree programmes, for which the expertise is in place. In parallel, the Institute is aiming for the third stage of the HKCAAVQ's quality assurance model, by planning to undergo Programme Area Accreditation (PAA) in three programme areas to attain self-accreditation status in diverse areas at HKQF Level 5, as an essential step towards the establishment of the Saint Francis University.



While placing appropriate emphases on their respective disciplinary areas, all the study programmes of CIHE comprise General Education (GE) courses as an integral component of their curricula, with the aim of widening students' exposure to meet different challenges in life, and to enhance their understanding of the different approaches to knowledge as well as the different perspectives and attitudes on issues relevant to collegiate education.

To pave the way for its future development, CIHE has undergone a revision of its academic structure by replacing the former academic departments with schools. At present, in CIHE, the following five academic schools are responsible for the offering of the abovementioned study programmes:

- ▶ School of Business and Hospitality Management
- ▶ School of Computing and Information Sciences
- ▶ School of Health Sciences
- ▶ School of Humanities and Languages
- ▶ School of Social Sciences

Besides locally-accredited study programmes, CIHE has been offering top-up degree programmes in collaboration with local/overseas universities since the early 1990s. These collaborative programmes as well as other extramural courses are administered by the Centre for Advanced and Professional Studies (CAPS) of the Institute, and are delivered with support from the various academic units.

The Institute anticipates playing a dual role in its plan for future development. It intends to assume a leading role in forging cooperation, coordination and consolidation within the Catholic secondary education sector as well as the Caritas education community, and to provide the highest strata of the educational ladder within the Catholic education system. At the same time, the Institute will fill a special role in the post-secondary education system of Hong Kong by providing access at both sub-degree and degree levels for needy students of the Hong Kong community.

## Message from the Chairman of Board of Governors



Envisioned for becoming the first Catholic university in Hong Kong (to be named Saint Francis University), CIHE has been working tirelessly to offer quality undergraduate programmes. In addition to the bachelor programmes in business administration, language and general studies, and social sciences introduced in its early years, CIHE has gradually developed the bachelor programmes in nursing, digital entertainment, social work, and health sciences. We now offer 14 majors across 6 bachelor's degree programmes. There are 1,981 full-time and 516 part-time students between CIHE and its adjoining sister CBCC with coordinated articulation pathways in a twin-college system.

The programme portfolio of the Institute takes advantage of the learning and professional opportunities afforded in the extensive network of Caritas – Hong Kong as one of the largest community service organisations in Hong Kong, encompassing social, medical, education, hospitality and other services. As the epitome of the service of Caritas at large, CIHE reaches out to serve *the last, the least, and the lost*, empowering them to realise their potential through access to inclusive higher education.

In line with the roadmap towards the private university title, CIHE is aiming at the self-accrediting status under Level 5 of the Qualifications Framework of the Hong Kong Council for Accreditation of Academic and Vocational Qualifications (HKCAAVQ), first in General Business Administration and then in Social Service and Healthcare.

CIHE aims not only to train learners academically and professionally, but also to nurture them morally and spiritually. We take it upon our shoulders that to educate is to mould characters like a potter moulds clay. May the Caritas motto of “*Love in the Service of Hope*” be with our younger generation, and may in turn become their motto in life, guiding them in their vocations and their every endeavour.

Cardinal Tong Hon  
Chairman, Board of Governors

## Message from the Chairman of Institute Council

I am pleased to present this annual report for the second year of my chairmanship of the Council of the Institute. The major achievements of the Institute in the 2018-19 academic year were made possible by the concerted efforts of the whole CIHE community, including our supporters, partners, staff, students and alumni.

Despite the continuous decline in the HKDSE graduate population, our student enrolment achieved a significant upsurge in the 2018-19 academic year, a testament to the public's recognition of the Institute's mission and vision, and the quality of our programmes.

In the reporting period, we also successfully developed and gained accreditation for three new programmes, namely, Bachelor of Education (Honours) in Early Childhood Education, Higher Diploma in Health Care, and Professional Diploma in Property Management. Another significant development is the establishment of our Centre of Religious Studies and Moral Education, to provide training for religious education teachers at diocesan and other schools.

In line with our vision and mission, our Institute continues with renewed determination to place at the heart of Whole Person Education respect for human dignity, character building and “IHD” or Integral Human Development

Existing programmes in different Areas of Accreditation are continuously strengthened. The Bachelor of Nursing (Honours) (BN) programme, which was launched with an enrolment of 125 students in 2014, will expand its annual intake from 200 currently to 360 in the coming academic year. This corresponds to an expansion of the total BN student body from 1,000 to 1,800 students, making CIHE the largest Registered Nurses' education programme provider in Hong Kong. The new Higher Diploma in Early Childhood Education, Bachelor of Health Sciences, and Certificate in Vocational English were launched in the academic year. Moreover, to continuously refresh our education portfolio in line with student and community needs, more new sub-degree and degree programmes are being accredited, and additional laboratories and other special purpose facilities are being planned.

Our first Programme Area Accreditation (PAA) exercise is being completed for General Business Administration (GBA), and we are vigorously preparing for our second and third PAA exercises. Our aim is to embrace these exercises as a process of continuous self-enhancement.

I take this opportunity to thank the Board of Governors and all members of the Council, staff, students, alumni, donors and friends of CIHE for their invaluable advice and support for the work of CIHE in the year, and also in our journey towards the Saint Francis University.

Denis Chang, CBE, QC, SC, JP, Hon. LLD  
Council Chairman



## President's Overview



For the staff and students of the Institute, the 2018-19 academic year was a busy and fruitful year, in which we completely reviewed our academic programmes in the context of the environment, our progress, alignment with our mission, enrolment, resources, quality, and assessment. We made good progress in such areas as programme accreditation and re-accreditation, programme development, student recruitment, staff development, awards, and scholarship.

CIHE underwent our first Programme Area Accreditation for General Business Administration (GBA) conducted by the Hong Kong Council for Accreditation of Academic and Vocational Qualifications (HKCAAVQ) at Level 5 of the Qualifications Framework. This gives an important opportunity to ensure an effective structure of organisational governance and management, a robust quality assurance system, a healthy and sustainable financial management system as well as dedicated academic staff who share the vision of the Institute.

In line with the continuous decline in DSE student population at least until 2022, our overall aim for the education programmes we offer is stability, quality and sustainability, focusing on developing programmes aligned with societal and student-needs and offering academic diversity that allows more learners to benefit and support the social-economic wellbeing of Hong Kong.

For a second year in a row, our careful targeting of programme development enabled us to achieve a marked increase in student intake in the 2018-19 academic year. In particular, to help meet the shortage of professional nurses critically needed by the increasingly ageing community, the annual intake quota of our Bachelor of Nursing (Honours) Programme, previously increased from 120 to 200 in 2018-19, was approved for a further increase to 360 from the beginning of the 2019-20 academic year. We invested significantly in new facilities and additional staff, to ensure the quality of the teaching and learning environment of the expanded cohort. Our capability to expand the nursing intake will help meet the significant student demand for our nursing programme, and will help ease the pressure of this critical manpower pipeline in Hong Kong. Likewise, due to the needs for qualified social workers for meeting the increasingly complex and diverse social challenges, there is considerable student demand for our Bachelor of Social Work Programme, which is the only part-time top-up degree programme being offered by higher education sector. In August 2019, CIHE gained the approval by the Social Workers Registration Board (SWRB) to increase the annual intake of the Bachelor of Social Work (Part-time) Programme from 60 to 90.

In line with our not-for-profit mission, we aim to provide quality and affordable higher education and professional training for enabling young people to realise their potential. We are pleased that four of our Higher Diploma programmes were added by Government to the list of two of our degree programmes for receiving financial support from the Study Subsidy Scheme for Designated Professions/Sectors (SSSDP), from the beginning of the 2019-20 academic year, namely:

- ▶ Higher Diploma in Design
- ▶ Higher Diploma in Hospitality Management
- ▶ Higher Diploma in Pharmaceutical Dispensing
- ▶ Higher Diploma in Health Care

This will greatly ease the financial burden of the students on these four selected programmes. The net tuition fees to be paid by the students, after deducting the SSSDP subsidy, will be close to or the same as that charged by comparable programmes at publicly-funded institutions.

The past year also witnessed many achievements by both our staff and students in different areas. To name a few, Prof. K. H. Chan of Rita Tong Liu School of Business and Hospitality Management was ranked among the Top 5 researcher world-wide on Accounting and Finance research on China. Prof. Tsui Ming-sum of Felizberta Lo Padilla Tong School of Social Sciences was appointed the co-chief editor of the International Journal of Social Work. A book entitled “God-sent Angels: Ten enlightening students” 《來自凡間的天使:十個蛻變的故事》, jointly produced by the students and staff of the Felizberta Lo Padilla Tong School of Social Sciences, was chosen as one of the 50 recommended books for secondary students.

The new campus of CIHE has also been distinguished with four significant architectural awards, namely:

- ▶ Merit Award under Quality Building Award (QBA) 2018, in the category of Hong Kong Non-residential (New Building – Government, Institution or Community), and the Public Service Architecture (Hong Kong) Award of the Asia Pacific Property Awards for 2018-19; and
- ▶ Winner Award (Client/ Client's representatives) in the category of New Development, and the Grand Award, under the Building Surveyor Award 2019 organised by The Hong Kong Institute of Surveyors.

The new campus, equipped with advanced teaching and learning facilities, provides a much-improved teaching and learning environment and is designed to enable our teaching and research staff to engage and support students in both formal and informal settings. We are truly indebted to our supporters and the community at large for their generous donations as well as support and encouragement.

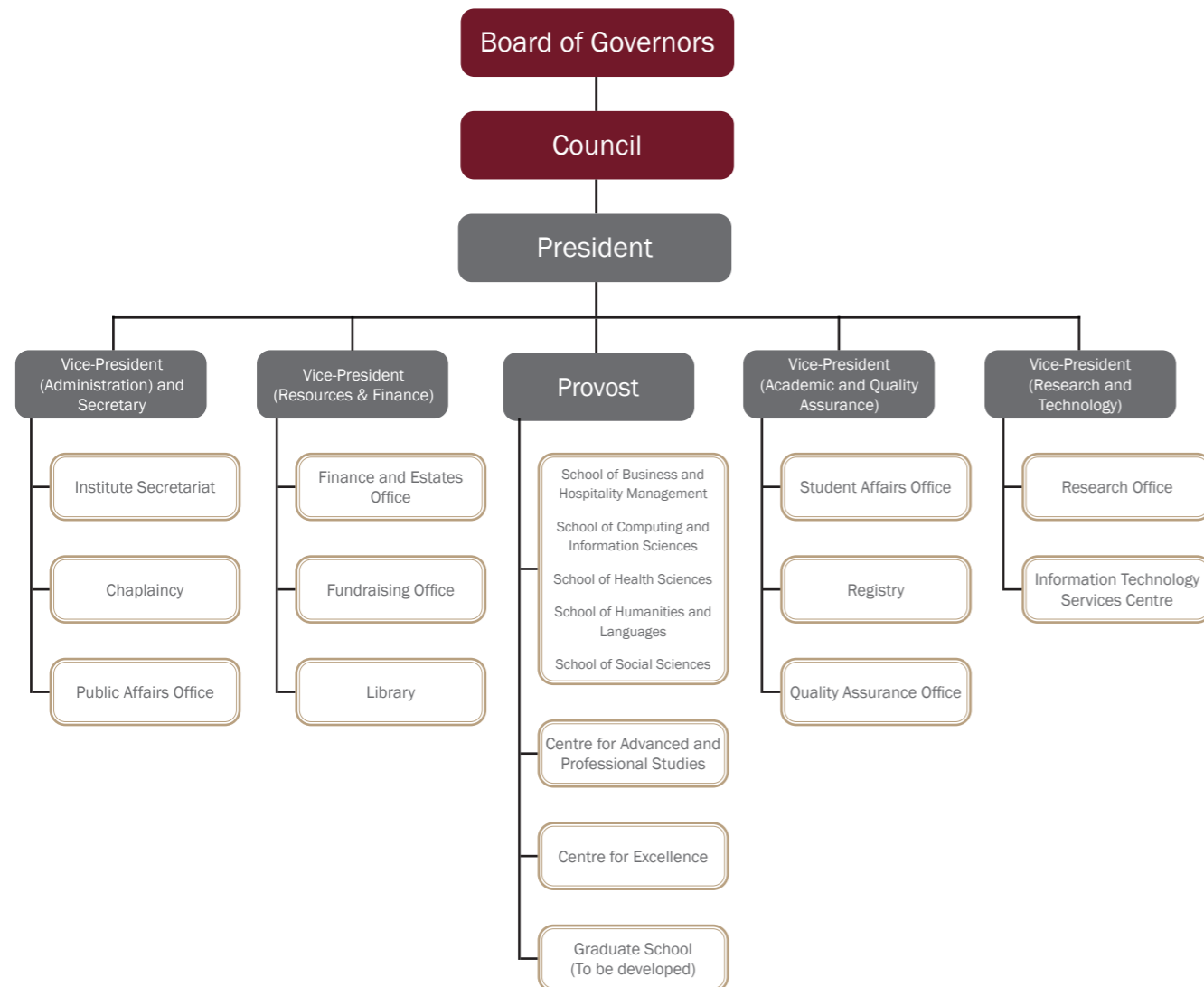
I would also like to thank the staff of the Institute for their commitment to the whole person formation of our students, and the colleagues of Caritas - Hong Kong, our sponsoring body, for their unfailing support.

Kim MAK, BBS, JP  
President

## Governance and Organisation

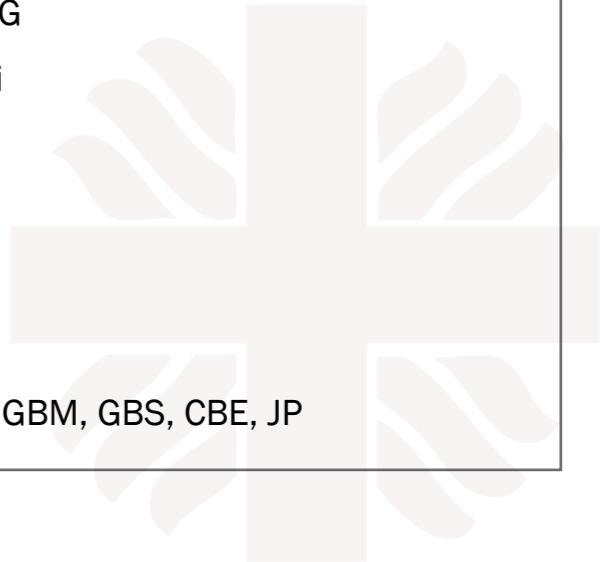
CIHE is managed under a common governance and organisational structure.

The Board of Governors, as the supreme governing body of the Institute, and the Council, as the executive body, are at the apex of the Governance/Committee Structure as well as the Organisational Structure. In each academic year, the Board of Governors holds at least two meetings, whereas the Council meets four times.



## Board of Governors

Chairperson	His Eminence John Cardinal TONG
Vice-Chairperson	Rev. Peter CHOY
Treasurer	Mr. Joseph T F HUI
Ex-officio Members	Rev. Joseph T L YIM Dr. Kim MAK, BBS, JP
Members	Mr. Denis CHANG, CBE, QC, SC, JP, Hon. LLD Dr. Louis CHOY Dr. Leo CHUANG Mr. Michael CHUANG Prof. KUAN Hsin Chi Mr. Francis LAW Prof. Vitus LEUNG Dr. Jacinto TONG Rev. John B TSANG Prof. Rosie YOUNG, GBM, GBS, CBE, JP



## Institute Council

Chairperson	Mr. Denis CHANG, CBE, QC, SC, JP, Hon. LLD
Vice-Chairperson	Rev. Joseph T L YIM
Treasurer	Mr. Joseph T F HUI
Ex-officio Members	Ms. FU Wing Lam Dr. Kim MAK, BBS, JP
Members	Dr. Carol CHAN Dr. Louis CHOY Rev. Peter CHOY Mr. Michael CHUANG Prof. Frederick HO Wing Huen, SBS, OBE Prof. KUAN Hsin Chi Mr. Frederick LAI Wing Hoi, JP Mr. Peter S T LEE, BBS, JP Mr. Peter Y W LEE Dr. Helen TINSLEY Rev. John B TSANG Prof. TSUI Ming Sum Prof. Rosie YOUNG, GBM, GBS, CBE, JP Prof. Susana YUEN

## Management Team

President	Dr. Kim MAK, BBS, JP
Provost	Prof. Annie BLIGH
Vice-President (Academic and Quality Assurance)	Dr. Dennis LAW
Vice-President (Resources & Finance)	Mr. Manhoe CHAN
Vice-President (Administration) and Secretary	Dr. Kat LEUNG





## Highlights of the Year

### The Second Annual Learning and Teaching Symposium

The theme of this year's symposium held on 12 June 2019 was Quality Enhancement of Learning and Teaching. Keynote speakers included Dr. Denis Chang, Council Chairman of CIHE and Senior Counsel in private practice, and Prof. Cecilia Chun, Director of Centre for Learning Enhancement and Research, The Chinese University of Hong Kong. Dr Denis Chang spoke on "Enhanced Self Learning (ESL): Lonergan's 4 levels and Beyond". The learning self emerges with a holistic vision where life and love, beauty and truth and all that is good are integrated in being – for the sake of "All under Heaven". Prof. Cecilia Chun shared her insights on promoting productive student engagement and active learning in learning-centered teaching.



### Saint Francis Teaching Excellence Award (2018-19)



Saint Francis Teaching Excellence Award is established to recognise academic staff members of CIHE and CBCC who demonstrated an outstanding level of teaching in the academic year. This year, four awards went respectively to Dr. Jacky Chan (Computing and Information Science), Ms Marcella Chiu (Social Sciences), Dr Kim Kwok (Social Sciences) and Dr. David Chan Wing Keung (Health Sciences) for their outstanding teaching practices. The awardees engaged colleagues with their inspirational sharing of good practices in teaching and learning, and their innovative approaches to support the learning of students.

### BHM Student Development Programme

The Rita Tong Liu School of Business and Hospitality Management initiated the BHM Development Programme in the BBA (Hons) programme. BHM is an acronym for the attributes of being Brilliant, Honest, and Modest.



This programme aims to nurture graduates who are not only professionally and academically well-prepared but who are ready to contribute to the social and moral well-being of the community. Through the programme, the School offers guidance and enhancement opportunities for students to become competent business graduates with strong interpersonal and communication skills as well as a high level of commitment and social responsibility. The highlight is the Professional Mentorship provided by CIHE alumni or dignitaries from business and professional sectors to full-time BBA students as mentees.

The inauguration ceremony cum professional mentorship orientation was successfully held on 29 November 2018. 10 mentors participated in this meaningful programme to support 14 student mentees. All mentors are highly devoted, demonstrating with real-life examples and applications, and sharing various experience with the student mentees. Professional mentorship is of immense benefit to both the personal and career developments of the students.

### The First Nursing Graduation Ceremony 2019



The School of Health Sciences celebrated its first Graduation Ceremony of the Bachelor of Nursing (Honours) Programme on 8 June 2019. Dr. Kim Mak, President of CIHE, officiated the ceremony and Prof. Sophia Chan, Secretary for Food and Health, Government of the Hong Kong Special Administrative Region, was the Guest of Honour. A total of 113 students received their graduation certificates. Prof. Chan led the graduates in reciting the Nightingale Pledge to affirm their commitment to the vision and values of nursing. The lighting of the lamp ceremony followed, to welcome the graduates enter the profession. It was a moving moment for all graduates, their families and the teaching staff who have supported the graduates throughout their five-year study. Overall, the ceremony was filled with love and joy.

## Development of Early Childhood Education



The brand-new BEdECE programme successfully completed the learning programme accreditation exercise of HKCAAVQ.



The public lecture of Prof. Hazel Lam on free play in early childhood education on 8 April 2019 attracted an audience of over 200 ECE practitioners, scholars and members of the general public.



The Institute co-organised the “Caritas - Hong Kong Early Childhood Education Forum” with Caritas - Hong Kong on 13 April 2019.

## The Carnival of World Heart Day 2018



The Carnival of World Heart Day 2018 was held on 14 October 2018 by Hong Kong College of Cardiology at Happy Valley Racecourse. The Carnival was open to the public. Eight of our nursing students were invited to hold a game booth in the carnival. They created a game booth called “波波代表我的心”, which suited everyone aged from 3 to 80. The souvenirs were designed by the students, to provide messages for the public to bring home. The game booth proved popular among the event participants, and the design of the game and souvenirs were well appreciated by the professional judges. The game booth was awarded “The Most Popular Game Booth” and “The Best Design Game Booth of the Carnival”.

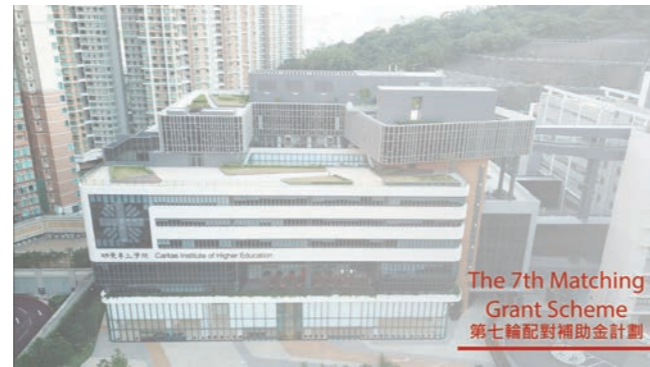
## WHO Health Carnival 2019



To support World Health Day, about 90 nursing students of the School of Health Sciences participated in the Health Carnival organised by the Hong Kong Academy of Nursing on 6 April 2019 at Cheung Sha Wan Playground. The students were volunteers and their main task was to deliver health talk, health check and health games to the visitors of over 20 booths. The School also organised and hosted a booth to convey health education and health promotion to the public. This activity was successful with positive feedback from the participants.

## Seventh Matching Grant Scheme

CIHE was ranked first among all self-financing institutions in the amount raised under the Government's Seventh Matching Grant Scheme, which ran for the two years from 1 August 2017 to 31 July 2019. A total of \$272 million donation was raised and \$100 million government matching grant was received through the Scheme.



## Naming of Rita Tong Liu School of Business and Hospitality Management and Deanships



In honour of the donation from L&T Charitable Foundation (L&T), subsidiary of Gale Well Group Limited (Gale Well), CIHE named the Rita Tong Liu School of Business and Hospitality Management and its deanships after Mrs. Rita Tong Liu, Founder and Chairman of both L&T and Gale Well, and her family for their contributions to the education services of the Catholic Diocese in Hong Kong.

## Naming of Felizberta Lo Padilla Tong School of Social Sciences and Deanship

The Felizberta Lo Padilla Tong School of Social Sciences and its deanship was named after Mrs. Rita Tong Liu's late mother and in honour of the donation from L&T and Gale Well.



## Establishment of Professorship and Scholarship



CIHE received donations from Alfar Charitable Trust (Alfar) and GS Charity Foundation Limited in support of two professorships in the School of Business and Hospitality Management to further enhance the capability of the School in both teaching and research. In addition, Alfar made a donation to set up a scholarship for needy students in CIHE and CBCC.

## Recognition of New Campus

The new campus of CIHE, conveniently located above the Tiu Keng Leng MTR Station, won the following prestigious awards:

- ▶ Merit Award under Quality Building Award (QBA) 2018, in the category of Hong Kong Non-residential (New Building – Government, Institute or Community)
- ▶ Public Service Architecture (Hong Kong) Award of the Asia Pacific Property Awards for 2018-19
- ▶ Winner Award (Client/Client's representatives) in the category of New Development under the Building Surveyor Awards 2019 organised by The Hong Kong Institute of Surveyors
- ▶ Grand Award, under the Building Surveyor Awards 2019 organised by The Hong Kong Institute of Surveyors

## Donation from Wofoo Foundation

CIHE received a donation from Wofoo Foundation in support of two special projects, including Wofoo Integrated Community Health Programme and Wofoo Leadership Training Scheme - Caritas Character Building. The roof garden of the CIHE Campus was named after Dr. Joseph Lee, Chairman of the Foundation.



## Professional Education

During the academic year 2018-19, CIHE offered varied professional training under the auspices of Local Professional Collaborative Programmes, Professional Training Programmes, and Religious and Life Education Programmes. Such training programmes serve the public by catering to different groups of learners based on their interest for professional enrichment. The administration of these professional training programmes is supported by CAPS of the Institute.



Local Collaborative Programmes include professional training programmes conducted in collaboration among local authorities, professional bodies and Schools/Departments of the Institute. These programmes encompassed Nursing, Mental Health Practice, Traffic Engineering, Clinical Pastoral Education, and Film Production.

Religious and Life Education Programmes cover religious studies and humanity aspects. These are very popular among Church members, teachers, and school administrators in the Catholic community in Hong Kong.



## Quality Assurance System

### Regular Review and Enhancement of Quality Assurance System

The Institute regularly reviews its Quality Assurance System (QAS) to maintain its fitness for purpose. This regular review of QAS has been conducted in light of the current practice in the post-secondary education sector and the Institute's recent development together with CBCC. Moreover, through a project funded under the Quality Enhancement Support Scheme (QESS) of the Education Bureau, the Institute received financial support for its QAS review to explore enhancement initiatives and to exchange ideas with the other higher education institutions on quality assurance (QA) practices.

### Improvement of Annual Review and Planning Cycle

Based on the annual review of an academic year and with reference to the respective key performance indicators (KPIs), the academic and non-academic units of the Institute prepare their operational plans for discussion before implementation in the following academic year. The operational plans of academic units are subject to review by the Quality Assurance Committee (Academic) and the Academic Board as appropriate. The operational plans of non-academic units are subject to review by the Quality Assurance Committee (Administration) and the Management Team as appropriate.

### Strengthening of Internal Accreditation/Re-accreditation

The Institute is also making internal programme accreditation / re-accreditation arrangements more detailed and rigorous for programmes with approved self-accreditation status, so as to assure the quality of these programmes for which external QA is not needed, and to demonstrate the Institute's self-accrediting competency in the programme areas concerned.



## Overseas Collaboration and Learning Experiences

The Institute collaborates with overseas institutions from the UK, Australia and Italy to offer relevant and well recognised programmes for the Hong Kong community, including the following top-up degree programmes offered with the University of Portsmouth during the year:

- ▶ BA (Hons) in Fashion and Textile Design
- ▶ BA (Hons) in Graphic Design
- ▶ BA (Hons) in Interior Architecture and Design

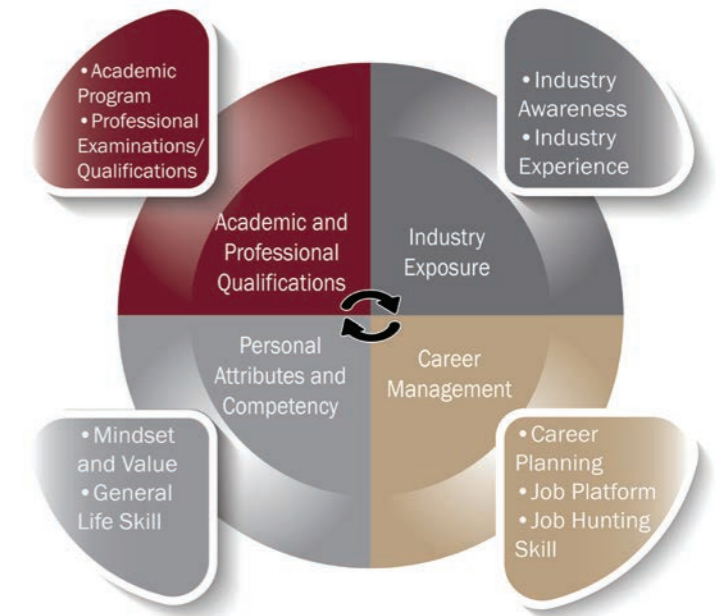


Study tour in Korea for Year 2 students of HDECE programme on 23-26 June 2019



## Career Planning Education

With funding support from the QESS, the Career Centre was established to help students enhance their career readiness and employability through industry exposure, career management and developing life-long employability skills, together with academic and professional qualifications.



In this academic year, the Career Centre provided a number of workshops to enhance competitiveness of students in the following areas:

Personality Discovery	Career Exploration	General Life Skills	Business Etiquette	Job Hunting
-----------------------	--------------------	---------------------	--------------------	-------------

The Career Centre also provided the following coaching services to students:

Career Planning	Mock Interview	CV Clinic	Job Hunting Reflection
-----------------	----------------	-----------	------------------------



In sourcing job opportunities, the Career Centre has been building relationships with industry leaders and employers, matching students to jobs, and organising career talks, company visits, and information seminars. A signature event was the Career Fair 2019 held on campus with over 30 employer-exhibitors, serving over 300 students from CIHE, CBCC, and our partner institute, Caritas Institute of Community Education (CICE).

## Serving the Community

### Caritas “Catch Up” Charity Walk 2019

The Caritas “Catch Up” Charity Walk was held on 19 January 2019 at the Hong Kong Golf Club. It was one of the Caritas’ 65th anniversary events for raising funds for the community. Student Ambassadors were mobilised to volunteer in the event. The highlight of the event was the three-legged race, which successfully achieved a record in the Guinness World Records.



### Life Education Project

The Student Affairs Office worked with the Diocesan Pastoral Commission for Marriage and the Family on a Life Education Project in 2019. Student ambassadors were engaged in workshops, interviews and writing of articles on the topic of miscarriage, to raise the public awareness of what really matters to the couples facing the challenge of miscarriage.

The ultimate goal is to raise public awareness of what really matters to the couples who are faced with the challenge of miscarriage. Featured articles written by the Student Ambassadors will be published in a booklet to be distributed to the public for educational purposes.



### Rotaract Club of Manhattan Hong Kong

The Rotaract Club of Manhattan Hong Kong was set up in December 2018 with the objective of serving the community, particularly children from low-income families. Members of the Club organised and took part in a number of events and services:



The “Family Outing to the Ocean Park” was organised on 21 December 2018 to bring joy to single-parent families during the festive season.

The Rotary Hong Kong Ultra Marathon Carnival was held on 24 March 2019 at Edinburgh Place in Central. Students set up and managed a game booth in the carnival to raise funds for the community.



Members of the Rotaract Club of Manhattan Hong Kong also held tutorial classes for primary school students from low-income groups during summer holidays.



## Scholarships and Financial Assistance for Students

### Scholarships

#### Self-financing Post-secondary Scholarship Scheme (SPSS)

A total of 113 students were awarded the scholarships in the Self-financing Post-secondary Scholarship Scheme (SPSS), which included five types of scholarships – Outstanding Performance Scholarship (OPS), Best Progress Award (BPA), Talent Development Scholarship (TDS), Reaching Out Award (ROA), and Endeavour Scholarship (EDS). They have demonstrated solid academic achievement, talent performance, and service to the community.



#### Institute Scholarship

To qualify for the scholarship, students must have passed all courses, attained at least 80% attendance rate in all courses, and scored an annual Graded Point Average of at least 3.0 in all courses. Awardees are recommended by the School and approved by the Academic Board. This year, eighty-seven students with the highest GPA in their respective study year and academic programme were awarded scholarships.

#### Alfar Charitable Trust Scholarship

To support the needy students for completion of their multiple years of studies with CIHE and CBCC, the Alfar Charitable Trust Scholarship awarded 25 scholarships to the students with financial difficulties. Upon completion of an 8-hour voluntary service and attainment of the minimum GPA requirement of respective years of study, scholarship awardees would be nominated for the scholarships in the following academic year until they complete their study programmes at sub-degree / degree level within a period of 2 to 5 years.

#### Chu Chiu Sen Bing Community Service Scholarship

This scholarship aims to encourage students to actively contribute and participate in community service, voluntary work and life education programmes. Nine students with a minimum annual GPA of 2.3 and a demonstrated commitment to the community were awarded. Eleven students with outstanding achievements were named the top awardees of the scholarship.

#### Always Hopes Foundation Scholarship

Twenty-three students were awarded the Always Hopes Foundation Scholarship which was established as an annual scholarship scheme to provide financial support to students studying full time degree programmes in CIHE. Each successful applicant would be able to receive the Scholarship in the subsequent year, upon achieving an academic result better than or equal to the minimum GPA required by the award of the Scholarship each year. In addition, the awardee was encouraged to take part in community service.

#### ICBC (Asia) Scholarship and Bursary

Five Scholarships and five Bursaries were awarded to students of Rita Tong Liu School of Business and Hospitality Management in recognition of academic excellence and to provide financial assistance to those with financial needs. The Scholarships were targeted for sub-degree and degree students with academic merit of Cumulative Graded Point Average (CGPA) of 3.0 or above. The Bursaries were aimed to provide relief to students having financial difficulty but do not receive any Government subsidy during their pursuit of education with CIHE and CBCC.

### Financial Assistance for Students

#### Extended Non-means-tested Loan Scheme (ENLS)

This scheme is administered by the Student Finance Office of Student Financial Assistance Agency (SFAA – SFO) to provide financial assistance in the form of loan(s) to Diploma, Professional Diploma, and part-time sub-degree or bachelor's degree students to settle tuition fees of self-financing programmes.

#### Financial Assistance for Self-financing Post-secondary Students (FASP) & Non-Means-Tested Loan for Self-financing Post-Secondary Students (NLSPS)

This scheme is administered by SFAA – SFO to provide means-tested financial assistance and loan(s) to needy full-time students pursuing locally-accredited, self-financing post-secondary education programmes at the level of sub-degree or bachelor's degree to settle tuition fees.

#### Non-means-tested Subsidy Scheme (NMTSS)

Starting from the 2017-18 academic year, the Government provides a non-means annual subsidy for eligible new and continuing students pursuing full-time locally-accredited local and non-local self-financing undergraduate (including top-up degree) programmes in Hong Kong offered by eligible institutions participating in the scheme (except those students already supported under SSSDP. The annual subsidy amount was HK\$30,800 in the 2018-19 academic year.

# Advancing Research Strengths

## External and Internal Research Funding Support

CIHE won three Faculty Development Scheme (FDS) and one Institutional Development Scheme (IDS) awards from the Research Grant Council. FDS aims to develop research capability of individual academics so that they can transfer their research experiences and new knowledge into teaching and learning. FDS is one of the most competitive research funding schemes for the local self-financing post-secondary education sector. The IDS award this year is for establishing an artificial intelligence laboratory as part of the research infrastructure of the Institute. RGC funded projects (2019-20 Exercise) are listed below:

Project Title	School
Revisiting the DeAngelo (1981) Theory on Auditor Size and Audit Quality at the Audit Firm, Audit Office and Engagement Partner Levels Project Title	Business and Hospitality Management
Energy-efficient joint resource scheduling for wireless networked control systems	Computing and Information Sciences
Anti-emetic potential of cocaine- and amphetamine-regulated transcript (CART) system in <i>Suncus murinus</i>	Health Sciences

Internal research grants were awarded to three academics to encourage research and enhance interdisciplinary research. In addition, CIHE supported 22 academics to attend local and international conferences to cultivate collaborative research culture.

## Publications

The number of articles published in international refereed journals with CIHE affiliation, are increasing steadily. Continuous improvement of quality is an important objective, not just quantity. The focus of research communities in CIHE, are on technology, social, healthcare, humanities and business research. The publications in 2018 are listed in the Appendix 1.

## Conferences

### The Fifth International Conference on Linguistics and Language Studies (ICLLS 2019)

Technology has become an integral part in all aspects of education, broadly covering curriculum planning, content development and delivery, communication among learners, instructors and institution, assessment and programme evaluation. The International Conference on Technology in Education (ICTE) aims to serve as a platform for academic exchanges across higher education institutions, especially good practices and results from studies. CIHE hosted the fifth conference on 25 – 26 June 2019 and the keynote speakers included Prof. Antony Kunnan of University of Macau, and Prof. Jonathan Webster, Director of The Halliday Centre for Intelligent Applications of Language Studies of City University of Hong Kong.



### The International Conference on Ethical Consideration of Human Services: Who Should Care?

To celebrate the 15th Anniversary, Felizberta Lo Padilla Tong School of Social Sciences organised an International Conference “Ethical Consideration of Human Services: Who Should Care?” on 13-14 June 2019. Four renowned scholars from different jurisdictions were invited to share their insights. The event set the stage for participants to build up links and ties with various educational institutions and service organisations.

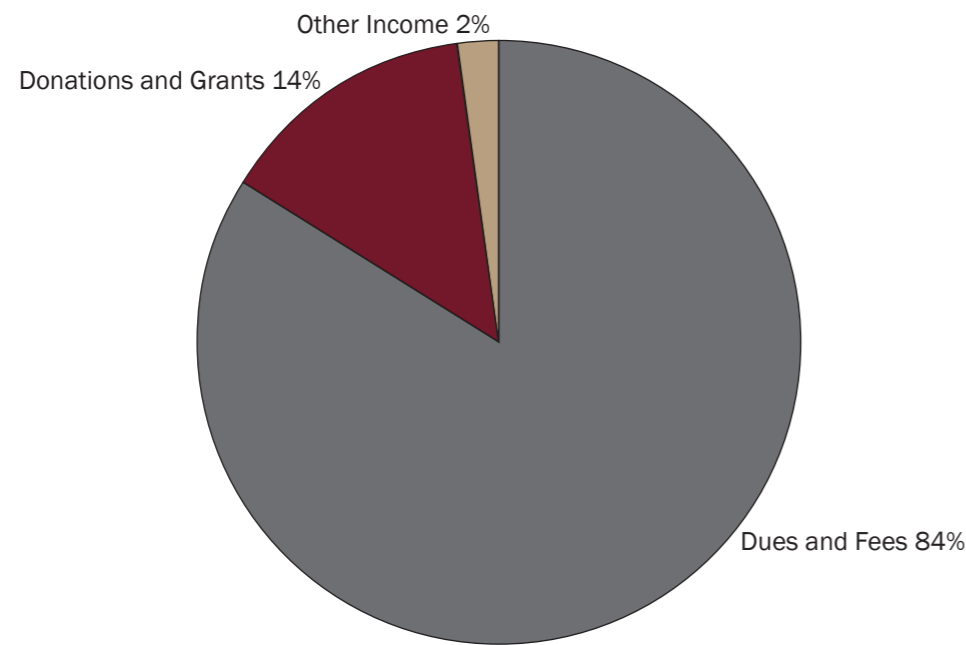




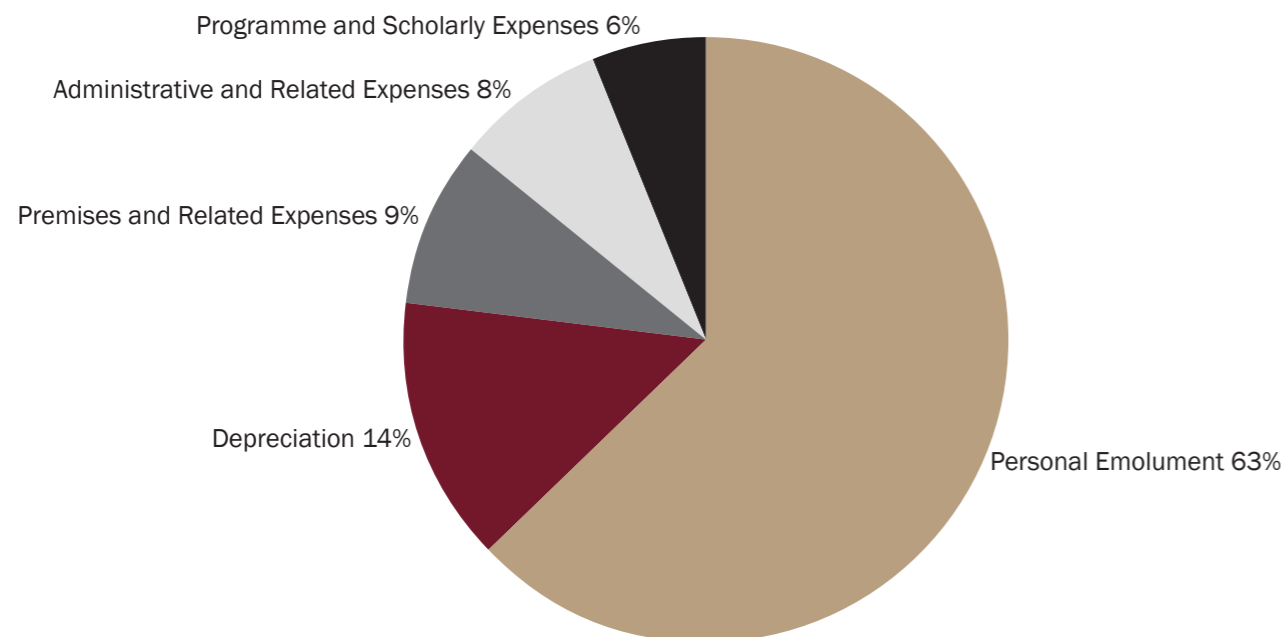
## Finance

The following charts summarised the operating income and expenditure of CIHE for the financial year 2018-19, i.e. from 1 April 2018 to 31 March 2019.

### Income



### Expenditure



## Facts and Figures

### Bachelor's Degree Programmes

#### Admission

Total Number of Student Admission for All-year Programmes	446
Total Number of Student Admission for Year 1 Programmes	373

#### Enrolment

	Number of Students
Male	503
Female	1,088
<b>Total</b>	<b>1,591</b>

Average HKDSE Score of Year 1 Students: **17.44**

### Higher Diploma Programmes

#### Admission

Total Number of Student Admission for All-year Programmes	256
Total Number of Student Admission for Year 1 Programmes	240

#### Enrolment

	Number of Students
Male	213
Female	283
<b>Total</b>	<b>496</b>

Average HKDSE Score of Year 1 Students: **13.15**

## Appendix 1

**Selected Publications in 2018 - 19**

1. Lai, K.W. & Leung, P.W. (2018). Unintended consequences of securities regulation: Stock value loss upon potential involuntary delisting in Hong Kong, *Global Finance Journal*, 37, 291-226.
2. Wong, T. T. A. (2018). A Study of Consumer Acceptance of Mobile Payment Services in Hong Kong. *Journal of Economics, Management and Trade*. 21(3): 1-14.
3. Wong, T. T. A. (2018). A Study of the Relationships of Customer Satisfaction and Brand Loyalty to Purchase Intention on Freeze-dried Fruits. *Journal of Global Economics, Management and Business Research*. 10(1): 1-8.
4. Li, K. & Wong, T. T. A. (2018). The application of permanent portfolio in financial management and retirement scheme, *Journal on Business Review*. 5(3), 38.
5. Wong, T. & Li, K. (2018). Can we make the permanent portfolio even better by rebalancing more frequently or by changing the rebalancing day? *Journal of Accounting and Finance*, North American Business Press, 18(4), 80.
6. Chen, J., Zhao, Y., Sun, Y., & Hancock, J. (2018). De novo haplotype reconstruction in viral quasispecies using paired-end read guided path finding. *Bioinformatics*, 34(17), 2927–2935.
7. Zhang, X., Fan, H., Lee V.C.S, Li, M., Zhao, Y., and Liu, C. (2018). Minimizing the total cost of barrier coverage in a linear domain. *Journal of Combinatorial Optimization* 36(2): 434-457 (2018) doi: 10.1007/s10878-018-0306-6
8. Wu, W., Zhai, X., Zhao, Y. (2018, July) On Minimizing Sensing Time via Data Sharing in Collaborative Internet of Things. *IEEE Access* 6: 41633-41642 doi:10.1109/ACCESS.2018.2859357
9. Fu, C., Wu, P., Li, M., Xue, C. J., Zhao, Y., & Han, S. (2018, July). Real-Time Data Retrieval with Multiple Availability Intervals in CPS under Freshness Constraints. *IEEE Transactions on Computer-Aided Design of Integrated Circuits and Systems*.37(11): 2743-2754 doi: 10.1109/TCAD.2018.2857378
10. Chen R., Xie H., Chen J., Rao Y., Zhao Y. & Wang F. (2018) Extractive Adversarial Networks for Network Embedding. In *The 5th International Conference on Behavioral, Economic, and Socio-Cultural Computing (BESC)*. Paper presented at Kaohsiung, Taiwan (pp.162-167)
11. Wong, T.-L., Xie, H., Lam, W., & Wang, F. L. (2018). A learning framework for information block search based on probabilistic graphical models and Fisher Kernel. *International Journal of Machine Learning and Cybernetics*, 9, 9, 1473-1487.
12. Quan W., Cheng N., Qin M., Zhang, H.K., Chan H. A., Shen X. (2018) Adaptive Transmission Control for Software Defined Vehicular Networks, *IEEE Wireless Communications Letters*.
13. Jayaraman, P. K., Fu, C. W., Zheng, J., Liu, X., & Wong, T. T. (2018). Globally consistent wrinkle-aware shading of line drawings. *IEEE transactions on visualization and computer graphics*, 24(7), 2103-2117.
14. Xia, M., Liu, X., & Wong, T. T. (2018, December). Invertible grayscale. In *SIGGRAPH Asia 2018 Technical Papers* (p. 246). ACM.
15. Zhang, Z., Hu, X., Liu, X., & Wong, T. T. (2018, October). Binocular Tone Mapping with Improved Overall Contrast and Local Details. In *Computer Graphics Forum* (Vol. 37, No. 7, pp. 433-442).
16. Han, C., Liu, X., Sinn, L. T., & Wong, T. T. (2018). TransHist: Occlusion-robust shape detection in cluttered images. *Computational Visual Media*, 4(2), 161-172.
17. Lee, V. C. S., Yu, Y. T., Tang, C. M., Wong, T. L., & Poon, C. K. (2018). ViDA: A virtual debugging advisor for supporting learning in computer programming courses. *J Comput Assist Learn Journal of Computer Assisted Learning*, 34(3), 243–258.
18. Li, M., Liang, H., Liu, S., Poon, C. K., & Yuan, H. (2018). Asymptotically Optimal Algorithms for Running Max and Min Filters on Random Inputs. *IEEE Trans. Signal Process. IEEE Transactions on Signal Processing*, 66(13), 3421–3435.
19. Li, X., Rao, Y., Xie, H., Chen, Y., Lau, R. Y., Wang, F. L., & Yin, J. (2018, May). Learning Dual Preferences with Non-negative Matrix Tri-Factorization for Top-N Recommender System. In *International Conference on Database Systems for Advanced Applications* (pp. 133-149). Springer, Cham.
20. Liang, L., Wei, M., Szymczak, A., Petrella, A., Xie, H., Qin, J., ... & Wang, F. L. (2018). Nonrigid iterative closest points for registration of 3D biomedical surfaces. *Optics and Lasers in Engineering*, 100, 141-154.
21. Liu, S., & Poon, C. K. (2018). On mining approximate and exact fault-tolerant frequent itemsets. *Knowl Inf Syst Knowledge and Information Systems : An International Journal*, 55(2), 361–391.
22. Pan, Z., Lei, J., Zhang, Y., & Wang, F. L. (2018). Adaptive Fractional-Pixel Motion Estimation Skipped Algorithm for Efficient HEVC Motion Estimation. *ACM Transactions on Multimedia Computing, Communications, and Applications*. <https://doi.org/10.1145/3159170>
23. Poon, C. K., Wong, T.-L., Tang, C. M., Li, J. K. L., Yu, Y. T., & Lee, V. C. S. (2018). Automatic Assessment via Intelligent Analysis of Students Program Output Patterns, *Lecture Notes in Computer Science*, 10949, 238-250.
24. Poon, G., Kwan, K. C., & Pang, W. M. (2018, July). Real-time Multi-view Bimanual Gesture Recognition. In *2018 IEEE 3rd International Conference on Signal and Image Processing (ICSIP)* (pp. 19-23). IEEE.
25. Wei, M., Wang, Q., Li, Y., Pang, W.-M., Liang, L., Wang, J., ...Wu, J. (2018). Centerline Extraction of Vasculature Mesh. *IEEE Access* 6, 10257–10268.
26. Xie, H., Wang, D. D., Rao, Y., Wong, T.-L., Raymond, L. Y. K., Chen, L., & Wang, F. L. (2018). Incorporating user experience into critiquing-based recommender systems: a collaborative approach based on compound critiquing. *International Journal of Machine Learning and Cybernetics*, 9, 5, 837-852.
27. Xie, H., Zou, D., Wong, T. L., & Wang, F. L. (2018). Modelling second language learners for learning task recommendation. *International Journal of Innovation and Learning*, 23(1), 76-92. <https://doi.org/10.1504/ijil.2018.088779>
28. Zou, D., Wang, F. L., Kwan, R., & Xie, H. (2018). Investigating the Effectiveness of Vocabulary Learning Tasks from the Perspective of the Technique Feature Analysis: The Effects of Pictorial Annotations In S. K. S. Cheung, J. Lam, K. C. Li, O. Au, W. W. K. Ma, & W. S. Ho (Eds.), *Technology in education: Innovative solutions and practices: Third International Conference, ICTE 2018, Hong Kong, China, January 9-11, 2018, Revised Selected Papers* (pp. 3-15). Singapore: Springer.
29. Zou, D., Wang, F. L., Xie, H., & Kohnke, L. (2018). Game-Based Vocabulary Learning in China and Hong Kong: Students Evaluation of Different Word Learning APPs.
30. Yip, C. S. C., & Fielding, R. (2018). Cradle-to-cooked-edible-meat analysis of greenhouse gas emissions. *Nutrient Cycling in Agroecosystems: (formerly Fertilizer Research)*, 112, 3, 291-302.
31. Fu, C., Liu, Q., Wu, P., Li, M., Xue, C. J., Zhao, Y., Han, S. (2018). Real-Time Data Retrieval in Cyber-Physical Systems with Temporal Validity and Data Availability Constraints. *IEEE Transactions on Knowledge and Data Engineering*. 31(9), 1779 – 1793.
32. Smith GD (2017/18). *Complementary and alternative medicine for Nurses and Allied Health Professionals: Evidence base and clinical applications*. Routledge, Oxon.
33. Yu, D.S.F., Ng, S.M., Lee, D.F.T., Choi, K.C., Low, L.P.L., & Woo, J. (2018). The effects of an activity-based lifestyle intervention on moderate sleep complaints among older adults: Study protocol for a randomized controlled trial. *Trial*, 19(1), 69. doi: 10.1186/s13063-018-2465-2
34. Lai, M.W.S., Low, L.P.L. & Wong, K.K.Y. (2018). Eating difficulties in newly-onset stroke patients: A qualitative inquiry of nurses' perceptions of the situation. *International Archives of Nursing and Health Care*, 4(1), 089. doi: 10.23937/2469-5823/1510089
35. Rudd J.A., Chan S. W., Ngan M.P., Tu L., Lu Z., Giuliano C., Lovati E., Pietra C.. (2018). Anti-emetic Action of the Brain-Penetrating New Ghrelin Agonist, HM01, Alone and in Combination With the 5-HT3 Antagonist, Palonosetron and With the NK1 Antagonist, Netupitant, Against Cisplatin- and Motion-Induced Emesis in *Suncus murinus* (House Musk Shrew). *Frontiers in Pharmacology Translational Pharmacology*. 6 August 2018. Vol. 9 Article 869. doi: 10.3389/fphar.2018.00869.
36. Chan, W.S.Y., & Leung, A. (2018). Use of Social Network Sites for Communication among Health Professionals: Systematic Review. *Journal of Medical Internet Research*, 20(3), E117. doi: 10.2196/jmir.8382.
37. Yip, C. S. C., & Fielding, R. (2018). Cradle-to-cooked-edible-meat analysis of Greenhouse Gas Emissions. *Nutrient cycling in agroecosystems*, 112(3), 291-302.
38. Yip, C., Lam, W., & Fielding, R. (2018). A summary of meat intakes and health burdens. *European Journal of Clinical Nutrition*, 72(1), 18-29.
39. Yip, K. H. (2018). Nursing care for patients undergoing total hip arthroplasty. *CHARM (Care, Health, and Arthritis and Rheumatism management)* 12, 11-12.
40. Yip, K. H. (2018). The experience of playing located based game among young adults: Findings from a focus group study. *Neuropsychiatry*, 8(5), 1674-1682. doi: 10.4172/Neuropsychiatry.1000505
41. Low, L.P.L., Wong, K.K.Y., Pau, M.M.L., & Chan, E.L.S. (2018). Isolating management styles of senior staff in residential care homes for older people. In: *Informal and formal caregiving for older care recipients*. HK College of Gerontology Nursing Newsletter, Issue 29, p.3.

42. Low, L.P.L., & Wong, K.K.Y. (2018). Health, medical and psychological concerns of ageing family members and older adult children with intellectual disability. In: *Informal and Formal Caregiving for Older Care Recipients*. HK College of Gerontology Nursing Newsletter, Issue 29, p.2.
43. Low, L.P.L. Decision-making in experiences and patterns in residential care homes of older residents, family members and care providers'. *Gerontology* (ISBN 978-1-78923-253-0). London: InTechOpen Limited. Chapter 11 at <http://doi.org/10.5772/intechopen.74267>
44. Smith, G.D., Gelling, L. Haigh, C, Barnason, S., Allan, H. and Jackson, D. (2018). The position of reporting guidelines in qualitative nursing research. *Journal of Clinical Nursing*, 27, 889-891. doi:10.1111/jocn.14213
45. Smith, G.D., Gelling, L. Haigh, C, Barnason, S., Allan, H., Penny, K. and Jackson, D. (2018). Transparency in the reporting of nursing research. *Journal of Clinical Nursing*, 27, 475-477. doi:10.1111/jocn.14212
46. Tang Q, Zhou Y, Yang S, Wong T, Smith G.D., Yang Z, Yuan, L & Chung J (2018). Effect of music intervention on apathy in nursing home residents with dementia, *Geriatric Nursing*, 39(4), 471-476, doi:10.1016/j.gerinurse.2018.02.003
47. Chan, Sin-wai (ed.) (2018) *An Encyclopedia of Practical Translation and Interpreting*, Hong Kong: The Chinese University Press.
48. Chan, Sin-wai (ed.) (2018) *The Human Factor in Machine Translation*, London and New York: Routledge.
49. Lee, P. C. W. (2018). A Study of Anaphoric Non-specific Object Drop in Cantonese: Classification and Derivation. Special issue on "The 20th International Conference on Yue Dialects". (Journal) *Current Research in Chinese Linguistics*. The Chinese University of Hong Kong, pp. 19-31. [http://www.cuhk.edu.hk/ics/clrc/crcl\\_97\\_1/lee\\_chi\\_wai\\_patrick.pdf](http://www.cuhk.edu.hk/ics/clrc/crcl_97_1/lee_chi_wai_patrick.pdf)
50. Lee, P. C. W. (2018). Case Study: Analyzing Speech Acts of a Spousal Caregiver When Responding to a Patient with Auditory Hallucination. Presented at Presented at 4th International Conference on Linguistics and Language Studies, organized by the Chartered Institute of Linguists Hong Kong Society, at Technological and Higher Education Institute of Hong Kong (THEi), 15-16 June 2018.
51. Li, S. K. (2018) Disappearance and Suspension – Post-97 Hong Kong films observation and contemplation. *International Journal of English: Literature, Language & Skills*, Vol.7 Issue 3 Oct 2018
52. Ng, H.N., Boey K. W., To, H.K. (2018). Impact of process of organizational empowerment on social workers. *Journal of Social Work Practice and Research*, 4, 59-84. [in Chinese]
53. Ng, H.N. & Boey K. W. (2018). A survey study on sexual dysfunction among women in Hong Kong. *Formosa Journal Sexology*, 24 (1), 27-49. [in Chinese]
54. doi: 103966/16085787208052401002
55. 范旭艷 (2018) : 〈從三教交涉視角論劉沅的氣學結構〉·《中華文化論壇》·2018年第8期·頁22-29。(中文核心期刊)
56. 范旭艷 (2018) : 〈民間學人劉沅「和會三教」觀念建構——以生死議題為討論中心〉·《人文中國學報》·第26期·頁197-228。
57. 范旭艷 (2018) : 〈身心實功——劉沅的生命體悟與經學詮釋〉·《經學研究論叢》·第24輯·頁39-70。
58. 范旭艷 (2018) : 〈三教合一“背後”的議題：評魏月萍《君師道合：晚明儒者的三教合一論述》〉·《九州學林》·第38期·頁167-174。
59. 范旭艷 (2018) : 〈太極函三元：劉沅天道觀中的儒道融合〉·余佳韻編《承繼與創新：中國文學研究再反思青年學者會議論文集》·南京：鳳凰出版社·2018年6月。
60. Kwok, C.K.A. (Composer), & Lau, L.B.M. (Lyricist). (2018). No! No! No!: The Hong Kong Children's Choir 50th Anniversary Children's Choral Songbook [Music Score]. Hong Kong, China: The Hong Kong Children's Choir.
61. Xie, H., Zou, D., Wong, T.L., & Wang, F.L. (2018). Modelling second language learners for learning task recommendation. *International Journal of Innovation and Learning*, 23(1). <https://doi.org/10.1504/ijil.2018.088779>
62. Zou, D., Wang, F. L., Xie, H., & Kohnke, L. (2018). Game-Based Vocabulary Learning in China and Hong Kong: Students' Evaluation of Different Word Learning APPs, *Technology in Education. Innovative Solutions and Practices : Third International Conference, ICTE 2018, Hong Kong, China, January 9-11, 2018, Revised Selected Papers*; 44-55; Singapore : Springer Singapore : Springer .
63. Zou, D., Wang, F. L., Kwan, R., & Xie, H. (2018). Investigating the Effectiveness of Vocabulary Learning Tasks from the Perspective of the Technique Feature Analysis: The Effects of Pictorial Annotations. *Technology in Education. Innovative Solutions and Practices : Third International Conference, ICTE 2018, Hong Kong, China, January 9-11, 2018, Revised Selected Papers*; 3-15; Singapore : Springer Singapore : Springer
64. Lee, P. C. W., & Lee. (2018). A Study of Anaphoric Non-specific Object Drop in Cantonese: Classification and Derivation *Journal: Current Research In Chinese Linguistics*, To appear in Jan 2018, The Chinese University of Hong Kong.
65. 李小杰《沈從文的文言與歐化體》·載吉首大學沈從文研究所編：《沈從文研究》(北京：北京聯合出版公司·2018年10月)
66. Cheung, V. H. M., Chan, C. Y., & Au, R. K. C. (2018). The influence of resilience and coping strategies on suicidal ideation among Chinese undergraduate freshmen in Hong Kong. *Asia-Pacific Psychiatry*, e12339, 1-7.
67. Chow, E. O. W., Cheung, C.-K., & Chan, G. H. (2018). Calibrating field practicum assessment in social work education with a competency-based evaluation tool in Hong Kong. *International Social Work*, 61(2), 260-273.
68. Ip, P., Li, T. M. H., Chan, K. L., Ting, A. Y. Y., Chan, C. Y., Koh, Y. W., ...Lee, A. (2018). Associations of paternal postpartum depressive symptoms and infant development in a Chinese longitudinal study. *INFBEH Infant Behavior and Development*, 53, 81-89.
69. Mo, K. Y.-H., & Lai, H.-S. (2018). Social worker turnover issue in mainland china: organizations can do something. *Hong Kong J. Social Work The Hong Kong Journal of Social Work*, 52(01n02), 63-83.
70. Mo, Y. H. & O'Donoghue, K. (2018). Nurturing a budding flower: External supervisors' support of the developmental needs of Chinese social workers in Shenzhen, China, *International Social Work* 62(2), 950-964.
71. Mo, K. Y., & Tsui, M. S. (2018). Toward an indigenized external supervision approach in China. *International Social Work*, 21:3, 348-358, DOI: 10.1080/13691457.2017.1341387.
72. Wei, A., & Tsui, M.S. (2018). Conjuncture and cultural reproduction in the process of embedding: social work practice in the context of government purchase of services in China. *China Journal of Social Work China Journal of Social Work*, 11(1), 18-40.
73. Mo, K. Y. H., Leung C., & Tsui, M. S. (2018). Chaos in order: The evolution of social work supervision practice in the Chinese Mainland. *The Clinical Supervisor*, DOI: 10.1080/07325223.2019.1610681.
74. Kwok, K. (2018). Diverging Opportunities: Chinese Migrants in the Transnational Immigrant Economy in Vienna. *Journal of Chinese Overseas*, 14(2), 216-243.
75. Kwok, K., Lee, K. M. & Law, K. Y. (2018). Multicultural social work practice and South Asian migrants in Hong Kong. *China Journal of Social Work*, 11(1), 56-72. <https://doi.org/10.1080/17525098.2018.1512367>
76. Tsui, M. S., Liang, J., & Guo, W. H. (2018). In search of meta-theory for social welfare organizations –The insights of the blind feels an elephant. *Contemporary Social Work Journal*, 10, 118-139.
77. Ye, J., Yeung, D., Liu, E., & Rochelle, T. (2018). Sequential mediating effects of provided and received social support on trait emotional intelligence and subjective happiness: A longitudinal examination in Hong Kong Chinese university students. *International Journal of Psychology*, 54(4):478-486, doi: 10.1002/ijop.12484
78. Chung, Y.Y.H. & Shek, D.T.L. (2018). Treatment fears: Barriers to young psychotropic substance abusers receiving residential drug rehabilitation treatment. *International Journal of Mental Health and Addiction*, 16(6), 1322-1342. doi.org/10.1007/s11469-018-9884-x.
79. Fu, Y.Y., Chui, E.W. T., Kan, W.S., & Ko, L. (2018). Improving primary level home and community care services for older people: The case of Hong Kong. *International Journal of Social Welfare*, 27(1), 52-61.
80. Cheung, J. C. S., Chan, K. H. W., Lui, Y. W., Tsui, M. S., & Chan, C. (2018). Psychological Well-Being and Adolescents' Internet Addiction: A School-Based Cross-Sectional Study in Hong Kong. *Child and Adolescent Social Work Journal*, 35(5), 477-487. <https://doi.org/10.1007/s10560-018-0543-7>
81. Tsui, M. S., Jianqiang & Guo, W. (2018) Searching a metatheory of social welfare organizations: The Myth of "blind men feel an elephant, each takes a part for the whole". *Journal of Contemporary Social Work*, 10, 118-139.
82. Wong, Y. C., & Wang, R. (2018). Social service outsourcing: Wuhan. In J. Lei and C. K. Chan. *Social Policy Revolution: Contracting out Social Services in China* (pp.88-104). Routledge.



📍 2 Chui Ling Lane, Tseung Kwan O, New Territories, Hong Kong  
(Exit B, Tiu Keng Leng MTR Station)

🌐 [www.cihe.edu.hk](http://www.cihe.edu.hk)

✉ [info@cihe.edu.hk](mailto:info@cihe.edu.hk)

☎ (852) 3702 4388

☎ (852) 3653 6798

📘 CIHECBCC

📷 CIHECBCC

📺 CIHE & CBCC